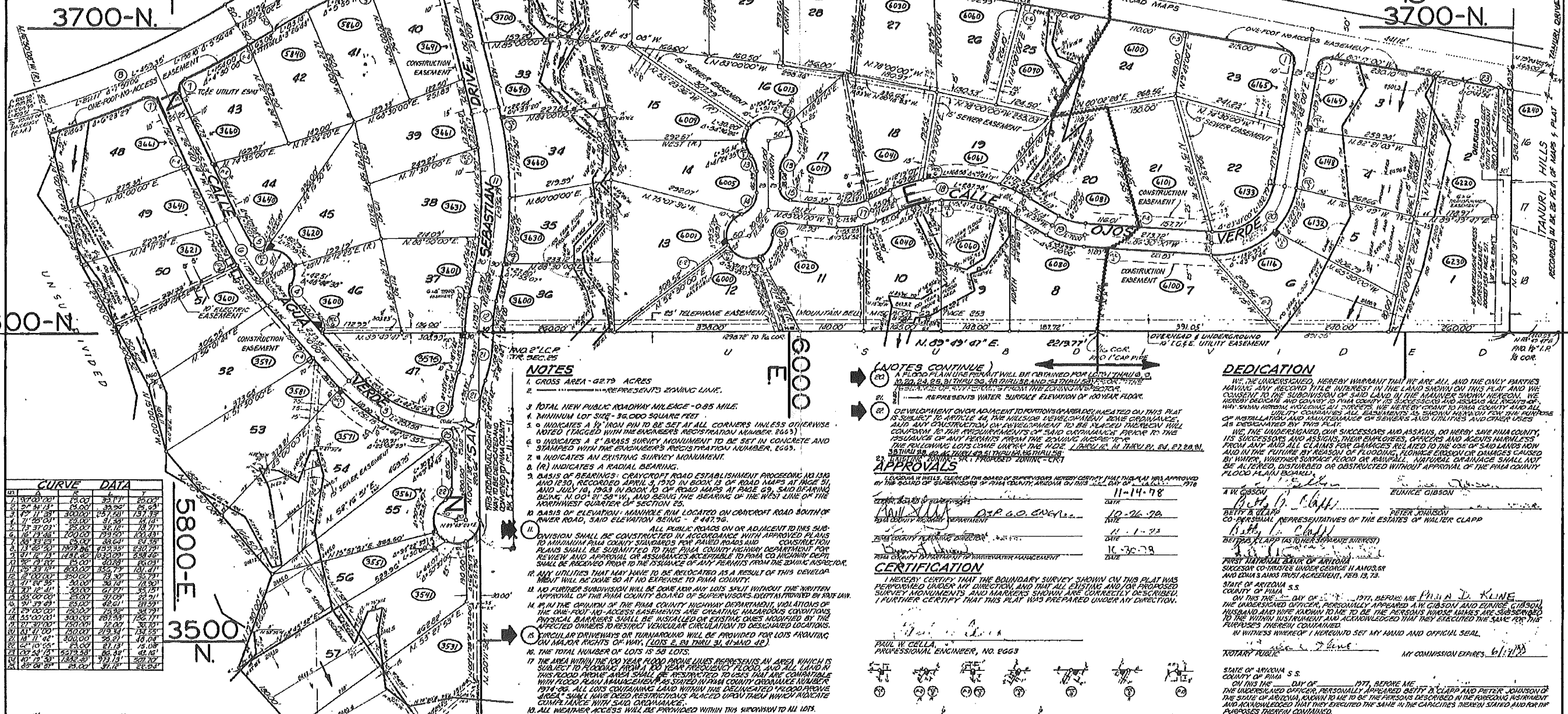


ASSURANCES
SATISFACTORY ASSURANCES IN THE FORM OF
FROM TITLE SECURITY OF ARIZONA
NO. T-218
DEED IN BOOK 3308

COUNTY RECORD
STATE OF ARIZONA S.S.
COUNTY OF PIMA
NO. 127375
FEE \$76.00

MAP 25
MAP 26



CURVE DATA table with columns for stationing and curve parameters.

- NOTES
1. GROSS AREA - 42.79 ACRES
2. REPRESENTS ZONING LAINE.
3. TOTAL NEW PUBLIC ROADWAY MILEAGE - 0.85 MILE.

- (NOTES CONTINUE)
A FLOOD PLAN PERMIT WILL BE OBTAINED FOR LOTS THRU 31, 32, 33, 34, 35, 36, 37, 38, 39, 40, 41, 42, 43, 44, 45, 46, 47, 48, 49, 50, 51, 52, 53, 54, 55, 56, 57, 58.
REPRESENTS WATER SURFACE ELEVATION OF ADJACENT FLOOR.

APPROVALS
BY BOARD OF SUPERVISORS OF PIMA COUNTY, ARIZONA ON THIS DATE OF APRIL 1978
11-14-78
10-26-78
11-1-78
10-26-78

DEDICATION
WE, THE UNDERSIGNED, HEREBY WARRANT THAT WE ARE ALL, AND THE ONLY PARTIES
HAVING ANY RECORD TITLE INTEREST IN THE LAND SHOWN ON THIS PLAN, AND WE
CAREFULLY AND CONSENT TO PIMA COUNTY ITS SUCCESSORS AND ASSIGNS ALL RIGHTS OF

CERTIFICATION
I HEREBY CERTIFY THAT THE BOUNDARY SURVEY SHOWN ON THIS PLAN WAS
PERFORMED UNDER MY DIRECTION, AND THAT ALL EXISTING AND/OR PROPOSED
SURVEY MONUMENTS, AND MONUMENTS SHOWN ARE CORRECTLY DESCRIBED.

WITNESSES
PAUL W. CELLA, PROFESSIONAL ENGINEER, NO. 8633
STATE OF ARIZONA S.S.
COUNTY OF PIMA
ON THIS THE 12 DAY OF JUNE 1978, BEFORE ME PHILIP D. KLINE

CONSENT TO DEDICATION
WE, THE UNDERSIGNED, HEREBY WARRANT THAT WE HOLD AN AGREEMENT FOR
SALE RECORDED AUGUST 19, 1977 IN DOCKET 5393, PAGE 158 AND WE DO HEREBY
CONSENT TO THE DEDICATION SHOWN HEREON.

TITLE SECURITY AGENCY OF ARIZONA, AN ARIZONA CORPORATION, AS TRUSTEE
UNDER TRUST NO. T-218
WILLIAM S. BOUGHTON, Trust Officer
STATE OF ARIZONA S.S.
COUNTY OF PIMA
ON THIS THE 12 DAY OF JUNE 1978, BEFORE ME JOSEPH R. CEDARE

STANDARD PEDESTAL AND TRANSFORMER EASEMENTS

(DEDICATION)
STATE OF ARIZONA S.S.
COUNTY OF PIMA
ON THIS THE 12 DAY OF JUNE 1978, BEFORE ME PHILIP D. KLINE

WATER ADEQUACY HAS BEEN PROVIDED IN COMPLIANCE WITH THE
PIMA COUNTY WATER ASSURANCE POLICY AND PURSUANT TO
ARS 45-513.
BY: PIMA COUNTY SUBDIVISION COORDINATOR
DATE: 10-26-78

RIO VERDE VISTA
LOTS 1 THRU 58
A PORTION OF THE NORTHEAST, SOUTHWEST AND THE
NORTHWEST ONE QUARTERS OF SECTION 25, T.13-S,
R.14-E, G4S.R.B4M, PIMA COUNTY, ARIZONA.

MAPS 25, 26
ZONE CD-1

Cella, Barr, Evans and Associates
ENGINEERS - PLANNERS
2075 NORTH SIXTH AVENUE, TUCSON, ARIZONA 85708
APRIL 1978
Co. 12-76-74
Co. 9-76-58
72203